

1088S Electric Bolt Lock Instruction

一、Product introduction:

This lock is specially designed according to voltage wave, which adopts working way of power-on to lock and power-off to unlock. The static current is only 0.15A, which belongs to lowest power waste of electric bolt lock in domestic market. The body temperature of lock is typically low when continues work with DC 10V~DC24V, without hot and it is safe and reliable to use.

二、Technical Parameters:

Working Voltage: 10VDC~24VDC

Working Current: Start State: 0.8A

Working Current: 0.15A

Working Temperature:-25~60℃

Humidity:10%~90%RH

Time Delay:1S, 2.5S, 5S

Dimension:204*33.5*37.5mm

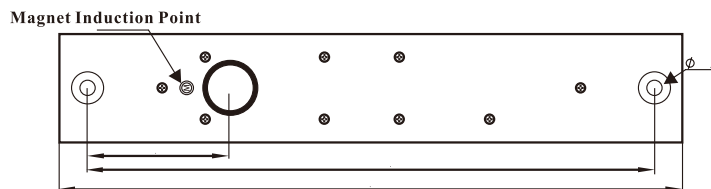
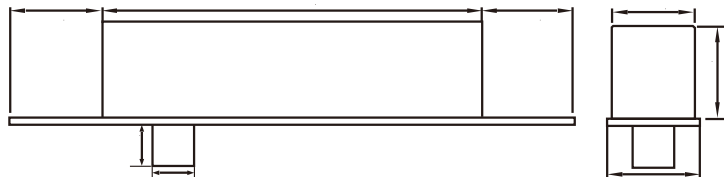
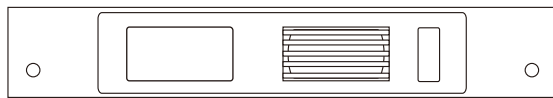
Safe type:power-on to lock and power-off to unlock.

Door type:glass door,wooden door and iron door

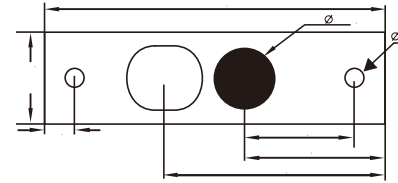
Connection: Red Line → Power Supply(+)

Black Line → Power Supply(-)

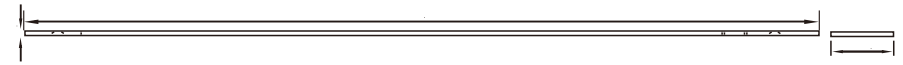
三、Dimension



Magnet Induction Clasp

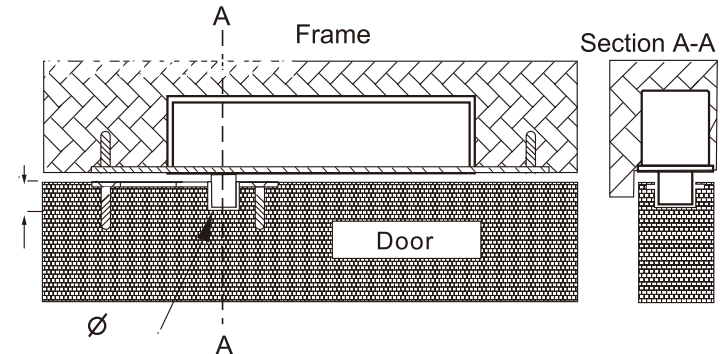


Stainless Steel Cover Board



Notice:Put the stainless steel cover board to cover the lock face after installation.

Diagram of Installation



Time delay: as following diagram

→ Engthen 0 second → Lengthen 2.5 second → Lengthen 5 second

Original Package List:

Electric Bolt Lock: 1piece

Screw: 1Package

Stainless Steel Cover Board : 1piece

Instruction:1 paper

Induction clasp: 1Piece